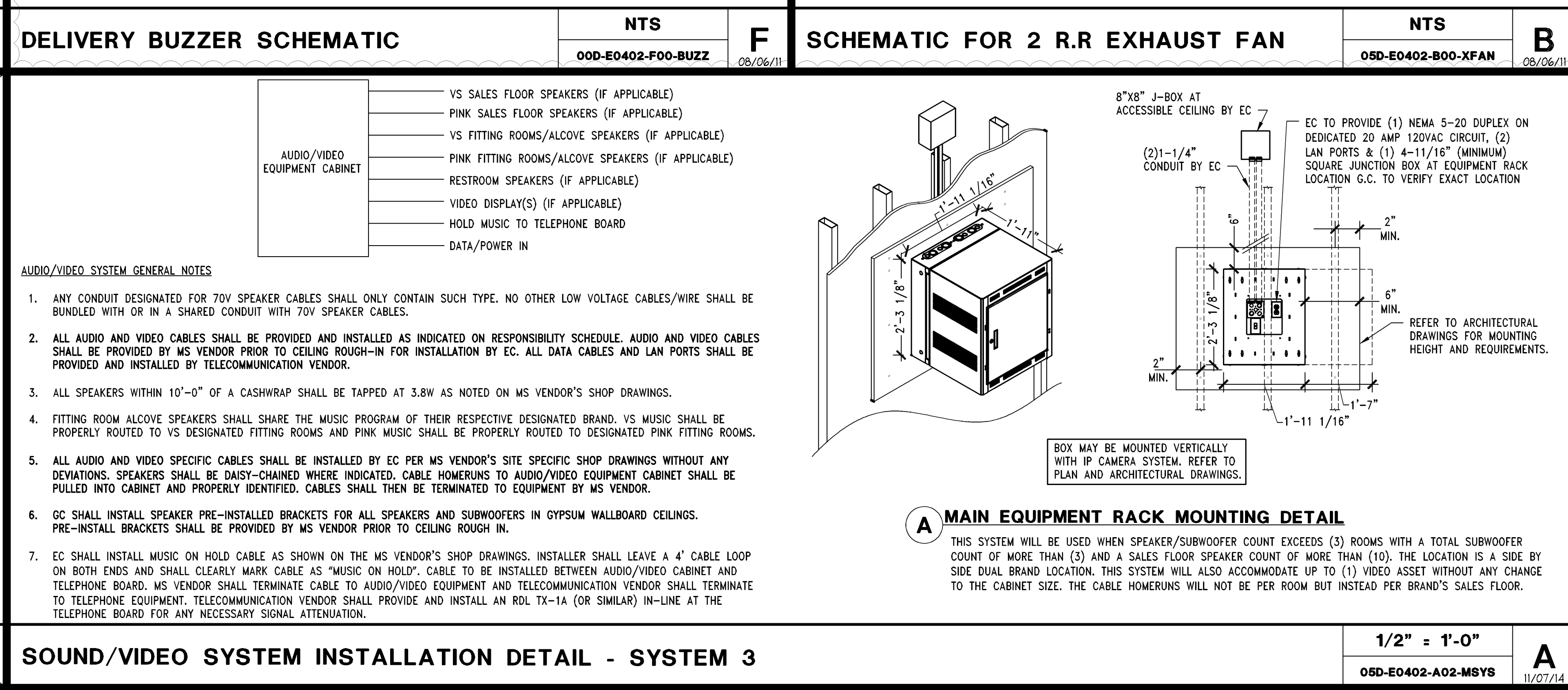
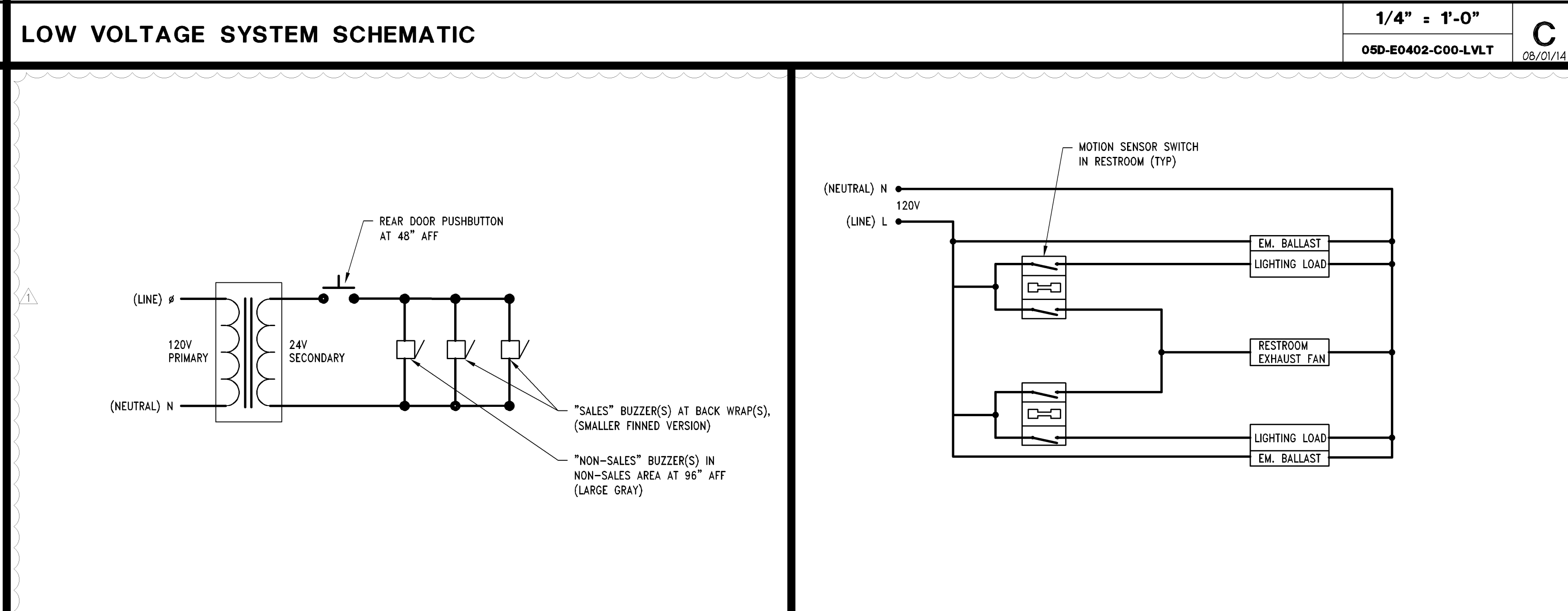
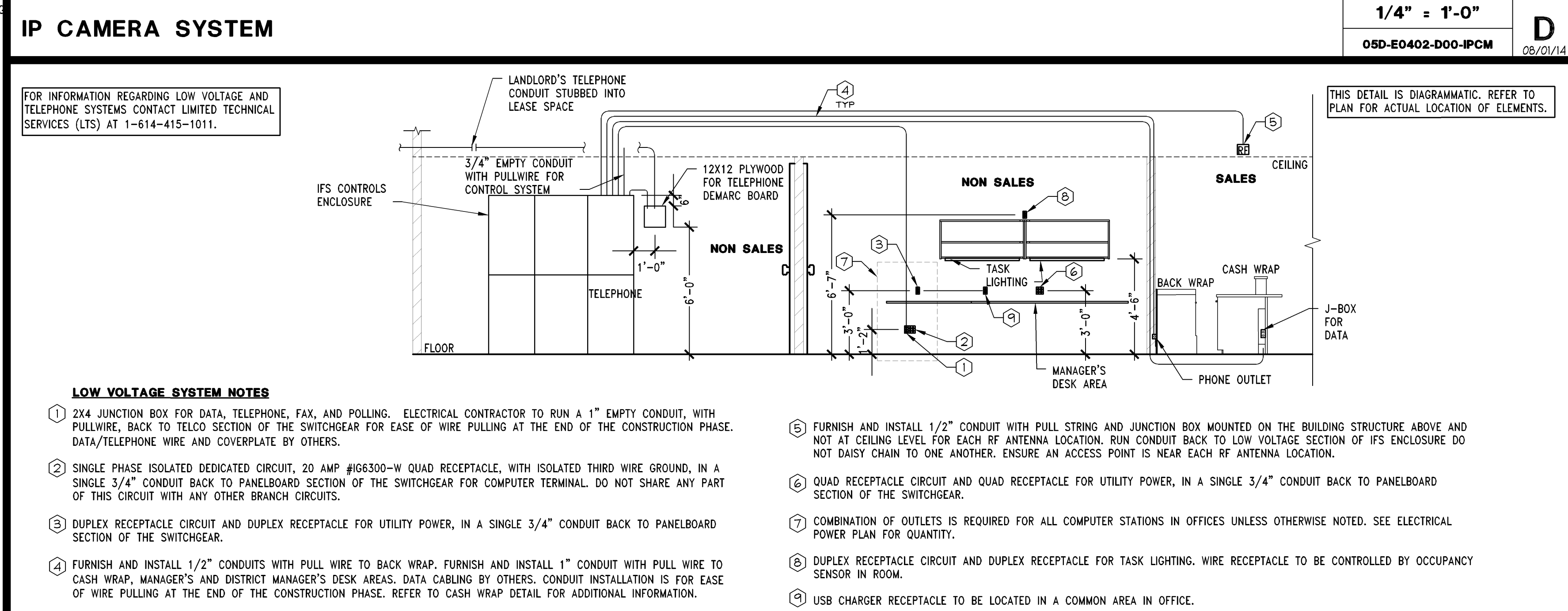
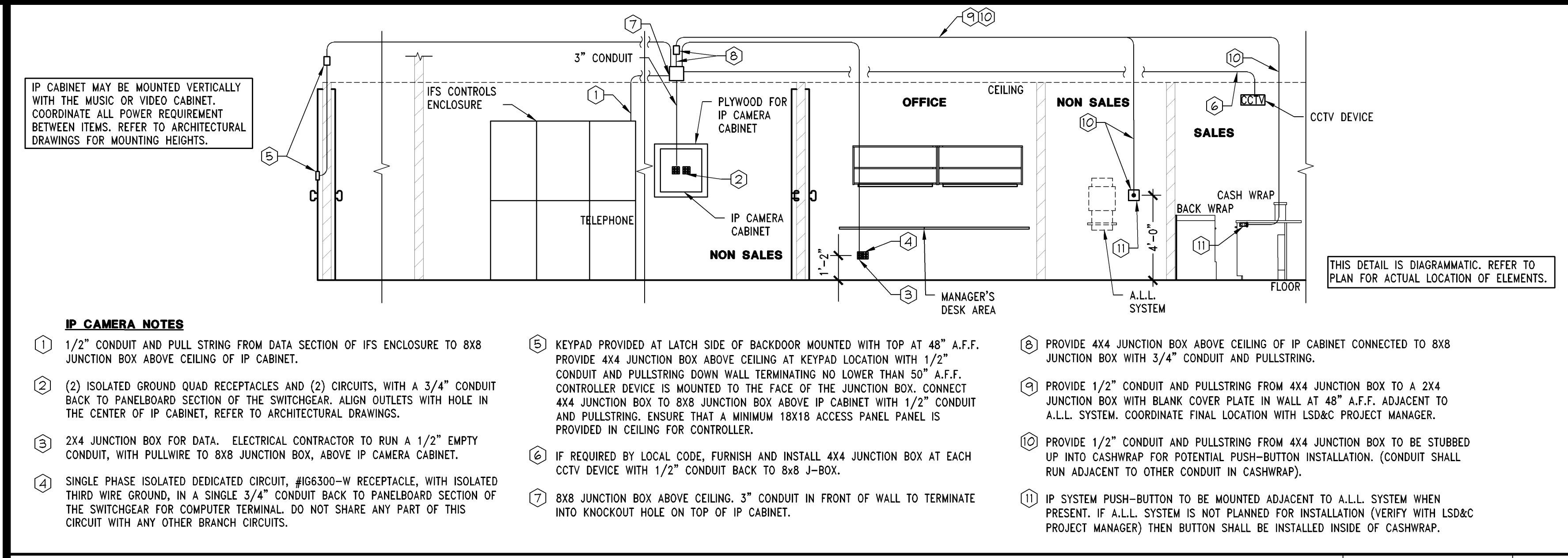
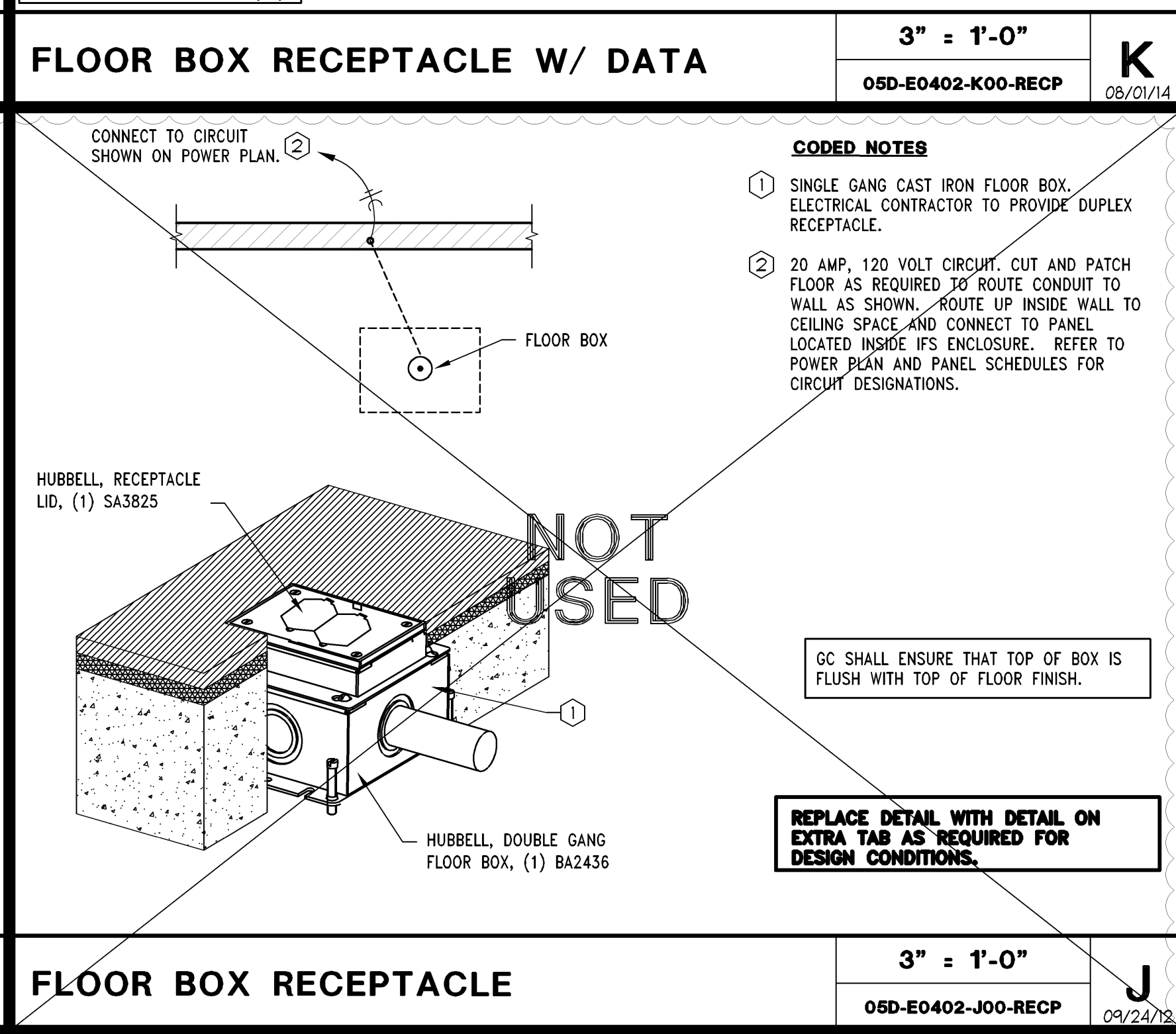
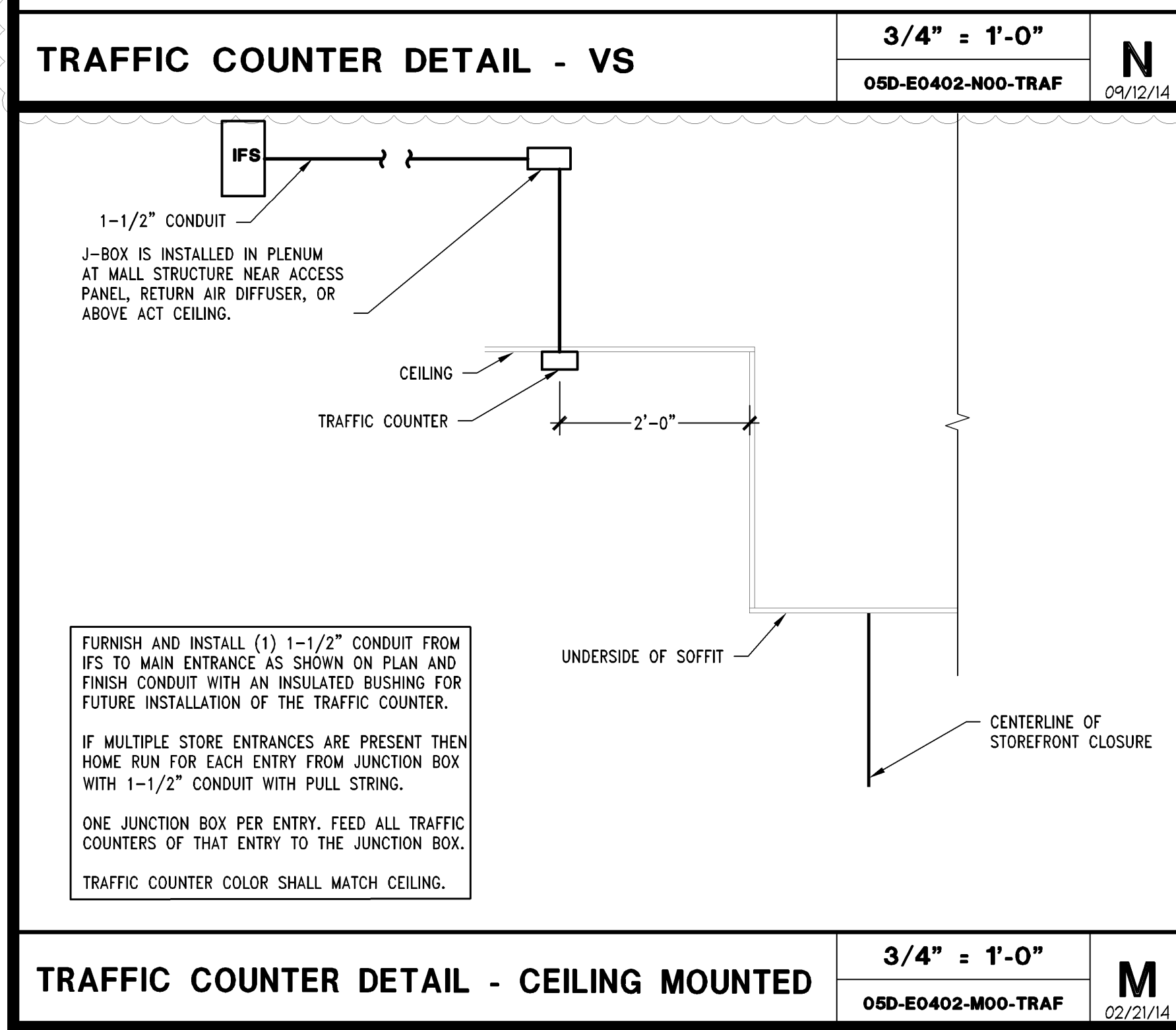
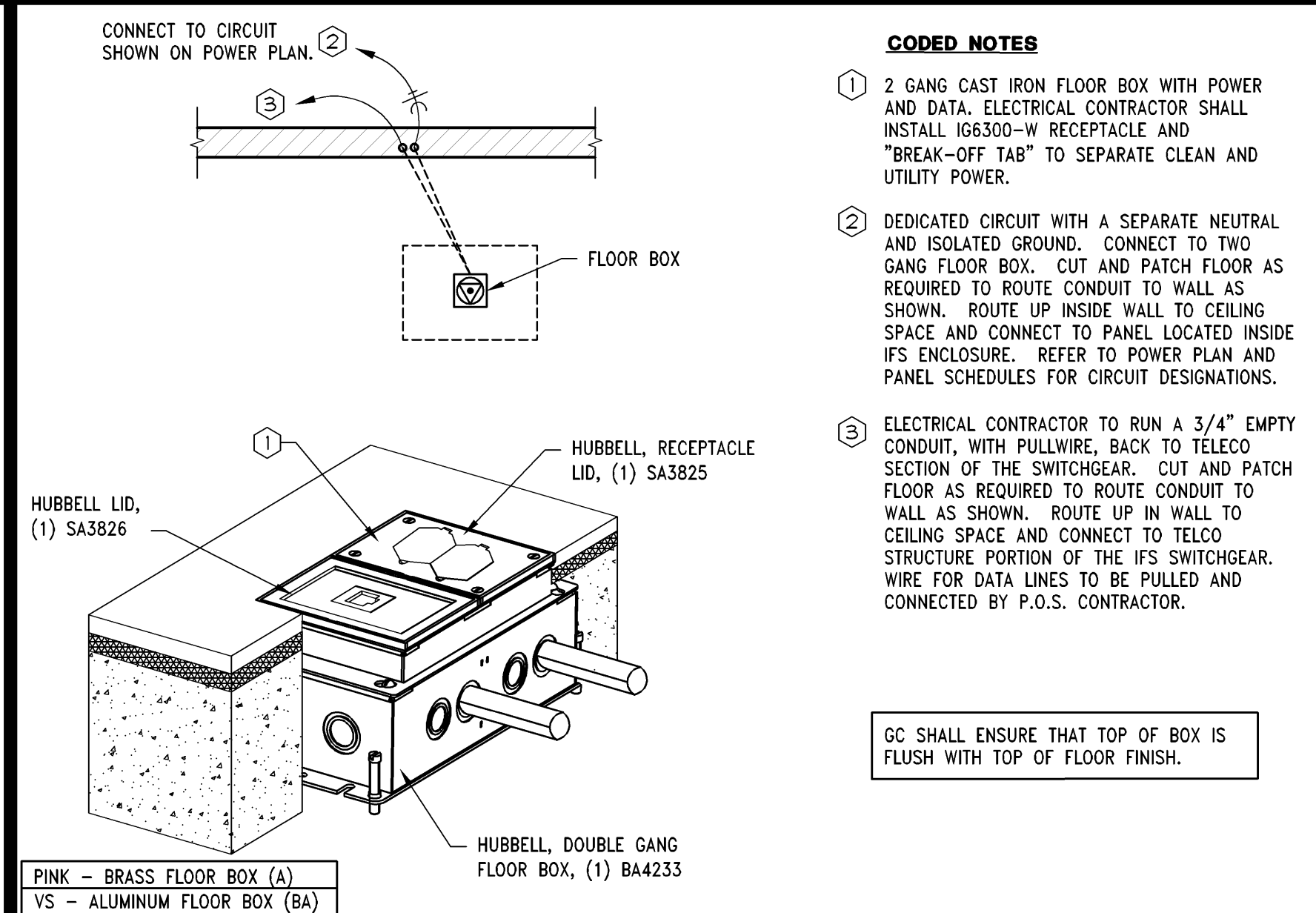
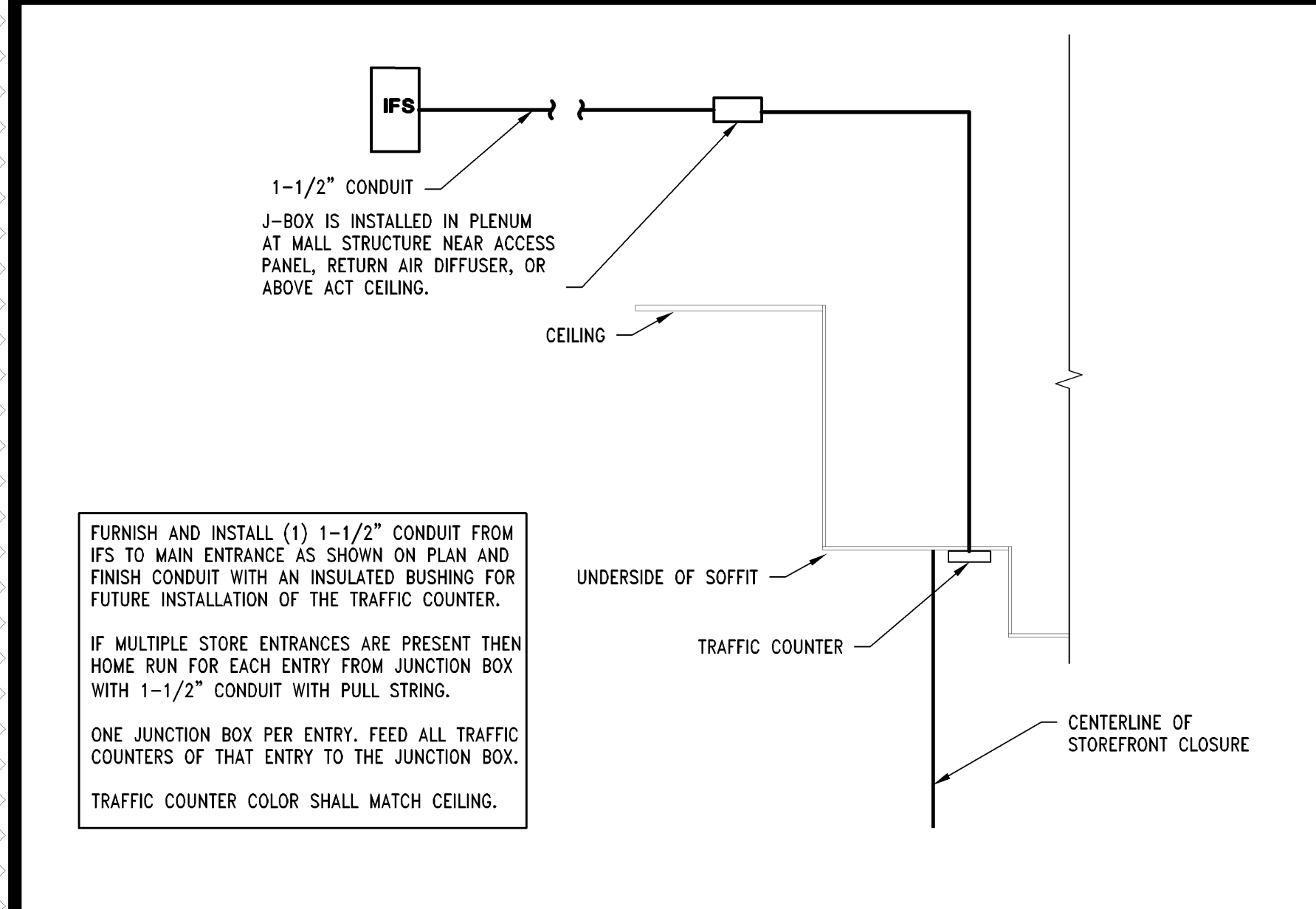


FITTING ROOM PAGING SYSTEM

3/8" = 1'-0"

05D-E0402-L01-PAGE

09/05/14



Thorson • Baker + Associates
CONSULTING ENGINEERS
3030 West Streetsboro Road
Richfield, Ohio 44286
(330) 656-6668 PH
(330) 656-6675 FAX

Lbrands

STORE DESIGN & CONSTRUCTION

Three Limited Parkway • Columbus, Ohio 43230
Telephone: 614.415.7000 • Fax: 614.415.7349

PROJECT INFORMATION:

VICTORIA'S SECRET

NORTH POINT MALL

SPACE #1050 NORTH POINT CIRCLE
ALPHARETTA, GA 30022

REVISIONS:

DATE ISSUED: 09/19/14
DESIGNED BY: RDW
DRAWN BY: TBA
CHECKED BY: JDM

ELECTRICAL DETAILS

DRAWING NUMBER: **E04.02**

010500587

PKG II

REMODEL

PACKAGE: N/A

GENERATION: SPRING 2015 (142E0)

PROJECT #: 00059876

A/E PROJECT #: